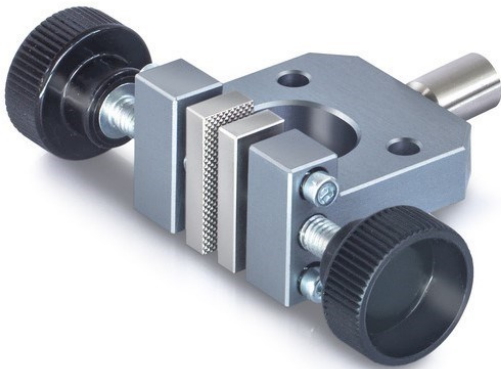


KERN AD 9005

KERN

Screw Tension Clamp for laboratory tensile force measurements incl. jaws with pyramid grip



Category

| | |
|------------------|---------------------|
| Brand | Sauter |
| Product category | Clamp |
| Product group | Screw tension clamp |

Construction

| | |
|---------------------------------------|------------------|
| Dimensions completely mounted (W×D×H) | 82×40×25 mm |
| Material | aluminium |
| Mounting - force dissipation | Threaded hole M6 |
| Tensile/compressive force [Max] | 400 N |
| Maximum clamp width | 100 mm |
| Clamping width | 8 mm |

Environmental conditions

| | |
|---------------------------|--------|
| Storage temperature [Min] | -10 °C |
| Storage temperature [Max] | 40 °C |

Packing & Shipping

| | |
|------------------------------|----------------|
| Readability force [d] (N) | 14 d |
| Dimensions packaging (W×D×H) | 82×40×25 mm |
| Net weight | 0,08 kg |
| Shipping method | Parcel service |
| Net weight approx. | 0,10 kg |
| Gross weight approx. | 0,10 kg |
| Shipping weight | 0,1 kg |

Pictograms